



液压元件 | 电液系统集成 | 智能化装备

Hydraulic Components Electro-Hydraulic Systems Intelligent Equipments

Hydflly

湖南鸿辉科技有限公司

Hunan Hydflly Science & Technology Co.,Ltd

CORPORATE PROFILE

企业介绍



湖南鸿辉科技有限公司是集液压元件研发生产、电液系统集成配套和智能装备设计制造为一体的高新技术企业。公司拥有一万多平方米的现代化厂房和五千多平方米的研发办公大楼，以及近百台以精密加工和实验检测为核心的设备群，专业开发生产液压多路阀、液压油缸等液压元件，功能阀组和液压泵站等电液系统集成产品，并研发制造机电液高度集成的智能化装备，长期服务于国内外工程机械、环卫机械、石油机械、港口机械、海工设备、矿山机械、军工等多个行业，并逐步凝聚出多种优势产品和解决方案。

Hydflly is a high-tech enterprise providing hydraulic components,electro-hydraulic systems and intelligent equipments for mobile and industrial customed applications. Hydflly has more than 10,000m2 of modern workshop, more than 5,000m2 of office building, and nearly 100 precision machining and testing equipments.Hydflly provides customed hydraulic solutions for mobile and industrial applications,such as hydraulic directional spool valves, cylinders, compact hydraulics, hydraulic power packs and machine equipments. Hydflly is long service to the domestic and foreign construction machinery, sanitation machinery, petroleum machinery, marine machinery, port equipment, military and other industries.

- 专注于液压控制行业20余年
- 多个领域200余家客户长期信赖
- 提供更有竞争力的机电液系统解决方案
- Focus on hydraulic transmission industry for more than 20 years
- Serve more than 200 customers in mobile and industrial machinery
- Provide more competitive mechanical-electro-hydraulic solutions



液压元件
Hydraulic Components



系统集成
Electro-Hydraulic Systems



智能化装备
Intelligent Equipments



公司前身是成立于1999年的深圳市夏普利实业有限公司。2008年9月，为适应企业的快速发展和战略客户的配套需求，投资4500万在湖南长沙经济技术开发区建立了新的生产基地，并注册成立了湖南鸿辉科技有限公司。

Hydflly 's predecessor was ShengZhen Shaply, built in 1999. In September 2008, the company invested 45 million RMB, set up a new production base in Changsha Economic & Technological Development Zone, and established Hunan Hydflly Science & Technology Co., Ltd .

CORPORATE PROFILE

企业介绍

- 国家高新技术企业
- 湖南省企业技术中心
- 湖南省小巨人企业
- 湖南省知名品牌
- 《移动式垃圾压缩箱动力站》、《液动下开式堰门》等团体标准起草单位
- 申请授权专利50余项，有效专利30余项。关键核心技术已布局专利池构建技术壁垒

Hydfly has won many honors, such as National High-tech Enterprise, Hunan Enterprise Technology Center, Hunan “Minitype Giant” Enterprise, Hunan Province Well-known Brand, drafting committee of the social organization standard 《Electro-hydraulic control system for mobile garbage compactor》, Hydfly also has applied for more than 50 authorized patents and more than 30 valid patents to protect intellectual property rights.

专业
Profession

专注
Focus

为了更好的贴近市场、服务客户，公司构建了30余人的销售、售后服务团队，在全国重点市场、重点客户设置了多个驻外办事处，快速响应客户售前、售中、售后阶段，以及整个产品生命周期的服务需求。

To come closer to the customers, Hydfly has built a sales and after-sales service team of more than 30 people, and established several service points in key markets, we provide support throughout the entire product life cycle.



- 公司是国内知名的环卫设备电液系统集成制造商，年生产能力达到3000套。
- 公司为自升自航式海洋工程船桩腿升降研发的全封闭式电液升降系统取得了多项关键技术创新，打破了欧美技术垄断。
- 公司是国内龙头石油装备制造企业的战略供应商，服务于国家能源建设。

- Hydfly is a well-known brand as a hydraulic solution provider for sanitation equipments in China, and the annual capacity reaches 3000 sets.
- Hydfly has implemented several key technological innovations for the fully-closed electro-hydraulic lifting system of self-propelled and self-elevating platform's pile leg, breaking the monopoly of technology in foreign-funded enterprises.
- Hydfly is the strategic supplier of one domestic leading petroleum equipment manufacturing enterprise.

质高
Quality

致远
Sustainability

多年来，公司已同国内多个行业内的知名企业建立了长期、战略的合作关系，现已发展成为中联重科、宝鸡石油机械、徐工集团、宇通重工、深圳东风、北汽福田等知名企业的重点供应商。

Over the years, Hydfly has established long-term and strategic cooperative relations with numbers of well-known enterprises in China. We are the focus supplier of ZOOMLION, XCMG, DFAC, BOMCO, YUTONG, FOTON, etc.



鸿辉科技·机电液系统应用场景解决方案服务商

Hydfly·Mechanical-Electro-Hydraulic Solutions for Customed Applications

HYDRAULIC DIRECTIONAL SPOOL VALVES 液压多路阀

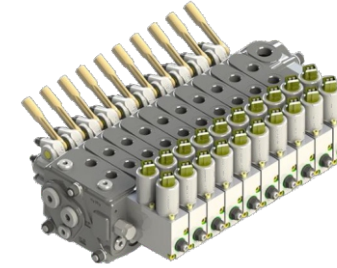


公司具有较强的液压元件研发能力，开发生产整体式、片式、压力补偿型、专用阀等类型的液压多路阀产品，包含开芯（Open Center）、闭芯（Positive Control）、流量共享（Load-independent flow sharing）等系统原理并形成了多项独家专利成果。产品主要应用于工程机械、工程车辆等行业设备。

Hydfly products kinds of hydraulic directional spool valves, including monoblock valves, sectional valves, pressure pre-compensated valves, and valves for special applications, there are various control systems available: Open Center(OC)、Positive Control(PC)、Load-independent flow sharing (LUDV),etc..

压力补偿型多路阀

Pressure Pre-Compensated Valves



FSV050

- LUDV阀后压力补偿型多路阀
- 额定流量：80（进油口）/ 50（工作口）L/min，
- 最高工作压力：300（进油口）/ 350（工作口）bar
- 操纵联数：1-12，片间距32mm
- 手动、电液比例控制

- Small and compact valve with Full Flow Sharing technology
- Nominal Flow Rating: 80 (inlet port) / 50 (working ports) L/min
- Max. Pressure:300(inlet port)/350(working ports) bar
- Number of Sections: 1-12, Pitch mm:32
- Manual, and proportional electro-hydraulic controls



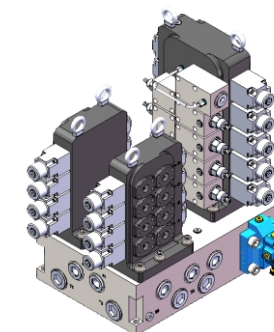
HCLPF25

- 通过压力补偿进行旁路分流调速
- 最大流量:240L/min，最高工作压力:320bar
- 液压先导控制

- Flow divider adjustment speed through pressure compensation
- Max. Flow Rating :240L/min,Max. Pressure:300bar
- Hydraulic controls

专用多路阀

Valves for Special Application



MDV38+2MDV32

- 为静力压桩机专门开发
- 额定流量：450L/min，最高压力：350bar
- 桩机多路阀是一种专用于压桩机上的集成多路阀，它由油路板阀组、压桩多路阀、支腿多路阀、行走多路阀四部分
- 集成式多路阀组体积更小，更加紧凑，重量更轻，占用空间小，成本低；减少了因为连接进回油管路而造成的压力损失；各多路阀采用铸造式阀体，避免了片式多路阀片间渗漏问题

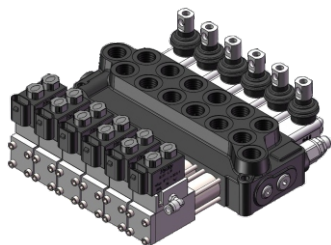
- Customed for Garbage Compactor Static Pile Driver
- Nominal Flow Rating:450L/min, Max. Pressure:350bar
- This valve consists of four parts: compact modular valve, MDV38 valve for pile pressing, MDV32 valve for leg and MDV32 valve for walking
- This integrated valve is smaller in volume, more compact, lighter in weight, occupies less space. Each monoblock valve is casting body to avoid leakage between sections.

HYDRAULIC DIRECTIONAL SPOOL VALVES

液压多路阀

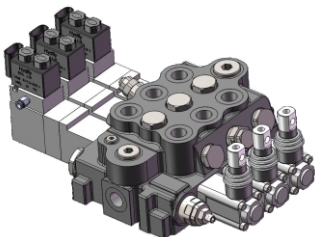
整体式多路阀

Monoblock Valves



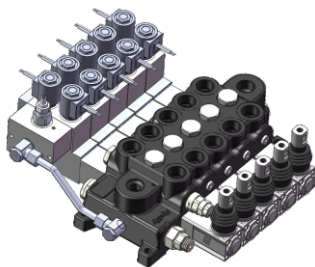
MDV12

- 额定流量：40L/min，最高压力：350bar
 - 开芯系统，开关换向
 - 整体式结构，减少漏油点，承受更高工作压力
 - 操纵联数量：1-6，片间距37mm
 - 手动、电、液、气控制
- Nominal Flow Rating:40L/min,Max. Pressure:350bar
 - Open center control, switch change
 - The monoblock structure is highly reliable in performance with reducing leakage points, and standing higher working pressures
 - Number of Sections: 1-6, Pitch mm:37
 - Manual, hydraulic, electro-hydraulic and pneumatic controls.



MDV110

- 额定流量：110L/min，最高压力：350bar
 - 开芯系统，开关换向
 - 整体式结构，减少漏油点，承受更高工作压力
 - 操纵联数量：1-5，片间距45mm
 - 手动、电、液、气控制
- Nominal Flow Rating:110L/min ,Max. Pressure:350bar
 - Open center control, switch change
 - The monoblock structure is highly reliable in performance with reducing leakage points, and standing higher working pressures
 - Number of Sections: 1-5, Pitch mm:45
 - Manual, hydraulic, electro-hydraulic and pneumatic controls.

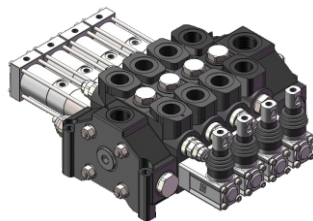


ZF15

- 额定流量：120L/min，最高压力：310bar
 - 开芯系统，开关换向
 - 整体式结构，减少漏油点，承受更高工作压力
 - 操纵联数量：4-5，片间距42mm
 - 手动、电、液、气控制
- Nominal Flow Rating:110L/min ,Max. Pressure:310bar
 - Open center control, switch change
 - The monoblock structure is highly reliable in performance with reducing leakage points, and standing higher working pressures
 - Number of Sections: 4-5, Pitch mm:42
 - Manual, hydraulic, electro-hydraulic and pneumatic controls.

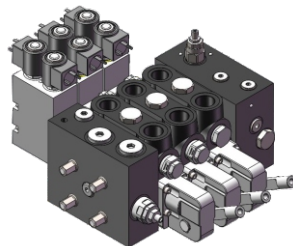
片式多路阀

Sectional Valves



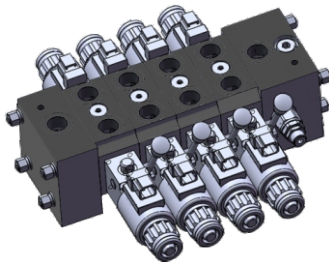
PF13/16/19

- 额定流量：70/110/150L/min，最高压力：310bar
 - 开芯系统，开关换向
 - 分体式叠加结构，组合性、集成性能较好
 - 操纵联数量：1-12，片间距38/42/46mm
 - 手动、电、液、气控制
- Nominal Flow Rating:70/110/150L/min,Max. Pressure:310bar
 - Simple, compact and heavy duty designed sectional valve
 - Number of Sections: 1-12, Pitch mm:38/42/46
 - Manual, hydraulic, electro-hydraulic and pneumatic controls



SDV100

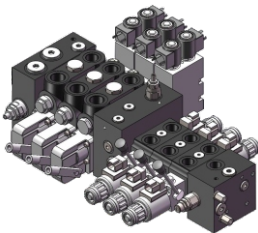
- 额定流量：80L/min，最高压力：350bar
 - 开芯系统，开关换向
 - 分体式叠加结构，先导油路集成到阀体内部，组合性、集成性能较好
 - 操纵联数量：1-8，片间距48mm
 - 手动、电、液、气控制
- Nominal Flow Rating:110L/min ,Max. Pressure:350bar
 - Open center control, switch change
 - Simple, compact and heavy duty designed sectional valve
 - Number of Sections: 1-8, Pitch mm:48
 - Manual, hydraulic, electro-hydraulic and pneumatic controls



SDVE060A/B

- #### SDVE060A
- 额定流量：40L/min，最高压力：250bar
 - 三位四通电磁开关换向
 - 操纵联数量：1-10，片间距47mm
- Nominal Flow Rating:40L/min ,Max. Pressure:250bar
 - Tri-position four-way electromagnetic valve
 - Number of Sections: 1-10, Pitch mm:47

- #### SDVE060B
- 额定流量：40L/min，最高压力：280bar
 - 三位六通电磁开关换向
 - 操纵联数量：1-7，片间距46mm
- Nominal Flow Rating:40L/min ,Max. Pressure:280bar
 - Tri-position six-way electromagnetic valve
 - Number of Sections: 1-7, Pitch mm:46



组合范例：SDV100+SDVE60

HYDRAULIC CYLINDERS

液压油缸

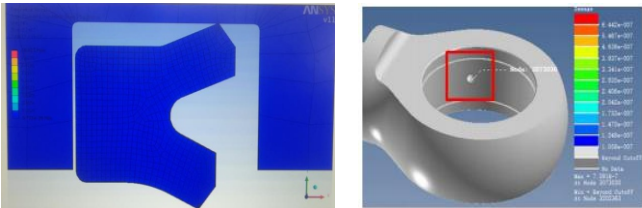


湖南鸿辉油缸科技股份有限公司是鸿辉科技为完善自身产品品类、更好的服务客户需求，于2020年注册成立。油缸公司专业从事液压油缸产品的研发、生产、销售，以“高性能、高品质的油缸”为使命，秉承优于行业标准、超出客户预期的服务理念，致力于成为油缸行业的精英。产品包括常规工程油缸、摆动油缸、油气悬架缸、伺服油缸、电动缸、数字油缸、电液作动器等多种类型，主要应用于工程机械、矿山机械、石油机械、港口机械、军工等行业。

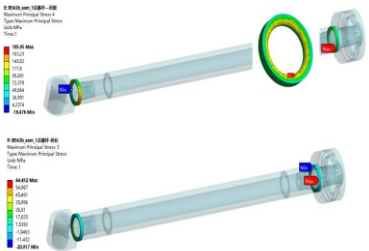
Hunan Hydflly Cylinder Technology Co., Ltd was founded in 2020. As a brand of Hunan Hydflly Science & Technology Co., Ltd , the purpose of the firm is to design and manufacture high quality hydraulic cylinders for customers with professional experience. Hydflly Cylinder products construction cylinders, rotary actuators, suspension cylinders, servo cylinders, electric actuators, digital hydraulic cylinders and electro-hydraulic actuators. Products are used for Construction Machinery, Mining Machinery , Petroleum Machinery , Port Machinery,etc.

行业领先的产品技术 超越期待的产品价值
Leading Technology Exceeding Expected Product Value

- 高压、高速、高可靠性
- 高强度、重载、轻量化
- 高性能、耐腐蚀、环保化
- 电液集成、数字化、智能化

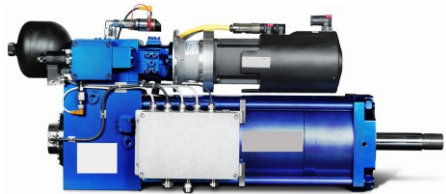


- High Pressure, High Speed, High Reliability
- High Strength, Heavy Duty, Light Weight
- High Performance, Corrosion Resistance, Environmental Protection
- Electro-hydraulic Integration, Digital, Intelligent



- 缸径：Ø32~ Ø400mm，杆径：Ø20~ Ø360mm，长度：50-8000mm，最大速度4m/s，工作温度-40℃-120℃
- 进行镀铬、镀镍铬、激光熔覆等工艺提高材料表面硬度、抗磨损、抗腐蚀；采用进口高压密封件，运行摩擦阻力小，寿命长，工作极为可靠，满足高速、重载等恶劣工况
- 专利高氮合金材料，大幅提高油缸表面硬度和耐腐蚀性

- Bore: Ø32~ Ø400mm,Rod: Ø20~ Ø360mm,Length: 50-8000mm, Max.Speed: 4m/s, temperature range: -40-120
- Compact structure, high power density; The piston rod surface can be chromium plating, nickel chromium plating, laser cladding to Improve surface hardness, abrasion resistance, corrosion resistance Adopt imported high pressure seals to meet the high speed, heavy load and other harsh conditions
- Patented high nitrogen alloy material, greatly improve the cylinder surface hardness and corrosion resistance

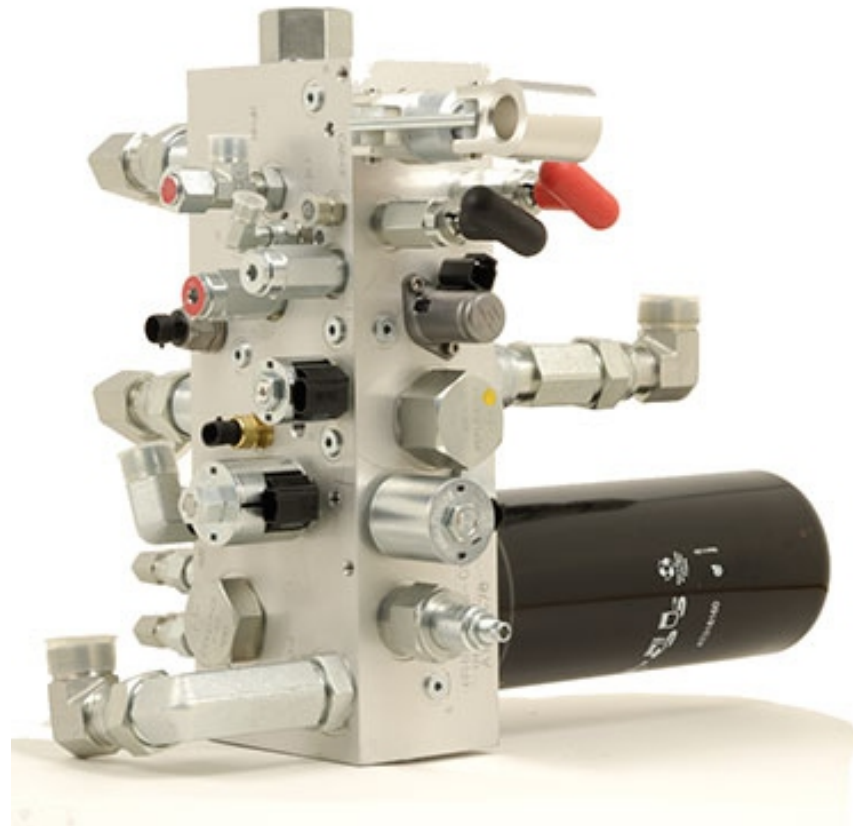


EHA电液作动器
Electro-hydraulic Actuator



COMPACT MODULAR VALVES

功能阀组



功能阀组作为液压系统中的集成控制单元，旨在提升整体系统控制的集成性、紧凑性，减少管路连接和漏油风险。公司具有多种板式叠加阀、螺纹插装阀的定制化开发能力，丰富的国内外液压阀件渠道资源，以及功能阀组的设计、加工经验，能根据客户需求快速定制化开发产品。多年来，已为工程机械、港口机械、环卫机械、海工石油机械、矿山机械、军工等不同行业，开发、制造了上千种高性能的功能阀组产品。并以功能阀组作为基础功能元件，根据具体主机应用场景的需求，构建出多种系统解决方案。

Compact modular valves are integrated circuits in the hydraulic systems to minimize the hydraulic connections' lay-out in the machines. Thanks to decades of experience, Hydfly can design and manufacture hydraulic industrial valves, screw-in cartridge valves, and customed compact modular valves to meet our customers' needs. We can offer the best solutions with reference to machine control functions, selection of components and optimized solutions. Products are widely used: construction machinery, sanitation machinery, marine machinery, petroleum machinery ,mining machinery, and military machinery, etc.

典型应用

Typical Application Cases

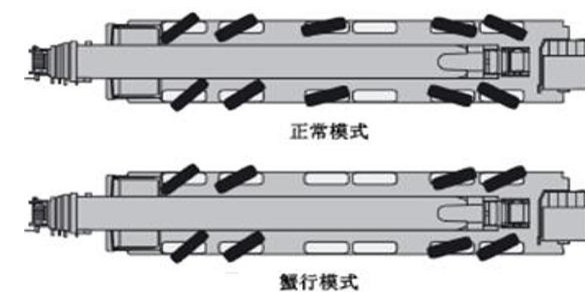
■ 轮式工程车辆多轴电液转向和油气悬架控制系统

Electro-hydraulic Steering System and Hydro-Pneumatic Suspension System for Wheeled engineering vehicle

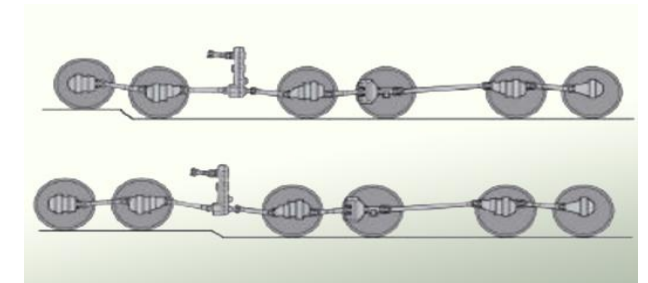
轮式工程车辆的多轴电液转向和油气悬架系统是提升高速行速车辆底盘的转场便捷性、越野通过性、驾驶舒适性的核心关键技术，具有极高的技术难度和可靠性要求。

公司具有20余年的相关技术积累和应用经验，通过采用系列功能阀组和元件，为全地面起重机、港口重载AGV、军工设备等多轴轮式车辆设备定制化开发了电液转向和油气悬架系统解决方案。

The multi-axle electro-hydraulic steering and hydro-pneumatic suspension system of wheeled engineering vehicles is the key technology to improve the transfer convenience, off-road passability and driving comfort. Hydfly has more than 20 years of relevant experience. By adopting compact modular valves , Hydfly has developed customized solutions of electro-hydraulic steering and hydro-pneumatic suspension system for multi-axle wheeled vehicle equipment such as all-terrain cranes, port heavy-duty AGVs and military equipments.



电液转向控制系统
Electro-hydraulic steering system



油气悬架控制系统
Hydro-Pneumatic Suspension System



全地面起重机
All Terrain Crane



港口重载AGV
Port Heavy-duty AGV

COMPACT MODULAR VALVES

功能阀组

■ 集装箱搬运设备电液控制系统

Electro-hydraulic Control System for Container Terminal Machinery

集装箱搬运设备主要有正面吊、堆高机、伸缩臂叉车等设备。设备的工作机构较多，工作频次较高，负载较大，对液压系统的可靠性要求极高。

公司具有多年的相关技术积累和应用经验，通过采用系列功能阀组和元件，形成了多种电液控制系统解决方案，可靠地控制臂架的伸缩变幅、吊具伸缩旋转、底盘行驶制动等功能。

The container terminal machinery mainly includes reach stacker, empty container handler, telehandler and other equipment. The equipments have many operating mechanism, which requires high reliability of the hydraulic system. Hydfly has several years of relevant experience. By adopting Compact Hydraulics, Hydfly has developed customized solutions to control the telescopic and amplitude of boom, telescopic and rotation of spenders, and braking of chassis, etc.



■ 高空作业平台电液控制系统

Electro-hydraulic Control System for Aerial Work Platform

高空作业平台主要有剪叉式、曲臂式、直臂式等类型。设备的工作机构较多，载人移动工作，对设备的安全性和液压系统的可靠性要求极高。

鸿辉科技在高空作业平台液压系统控制领域具有多年的相关技术积累和应用经验，通过采用系列功能阀组和元件，可靠地控制底盘转向和制动、臂架的伸缩和变幅等机构动作。

The aerial work platform mainly includes scissor lift, articulating boom lift, telescopic boom lift and other equipment. The equipments have the manned mobile work, which requires high reliability of the hydraulic system. Hydfly has several years of relevant experience. By adopting Compact Hydraulics, Hydfly has developed customized solutions to control steering and braking of chassis, expansion and amplitude of boom, and other mechanism actions, etc.



剪叉式高空作业平台功能阀组
Compact Modular Valve
for Scissor Lift



■ 矿山自卸车举升和转向制动电液控制系统

Electro-hydraulic Control System for Mine Dump Truck

矿山自卸车是大型露天矿、水利工程中，用于运输煤矿、沙石的专门自卸车。具有作业环境复杂、机动性好、周转速度快、载重能力大等特点。对液压系统的可靠性要求极高。鸿辉科技具有近20年的相关技术积累和应用经验，为108-300t电动轮自卸车的举升、转向、制动等功能提供了可靠的液压系统解决方案。

Mine dump truck is a special dump truck used for transporting coal mine, sand and stone in large open pit mines and water conservancy projects. It has the characteristics of complex operating environment, good mobility, fast turnover and large load capacity. The reliability of the hydraulic system is extremely high. Hydfly has nearly 20 years of relevant experience, for 108-300t electric wheel dump truck lift, steering, braking and other functions to provide reliable hydraulic system solutions.



电动轮矿山自卸车
Electric wheel dump truck



矿山自卸车功能阀组
Compact Hydraulic for Mine Dump Truck

公司的板式叠加阀、螺纹插装阀产品类型广泛，包括方向阀、压力阀、流量阀等不同功能产品，也可根据需求进行定制化开发。

Hydfly has a wide range of industrial valves and screw-in cartridge valves, including direction valve, pressure valve, flow valve and other functions. We can also provide customized products.



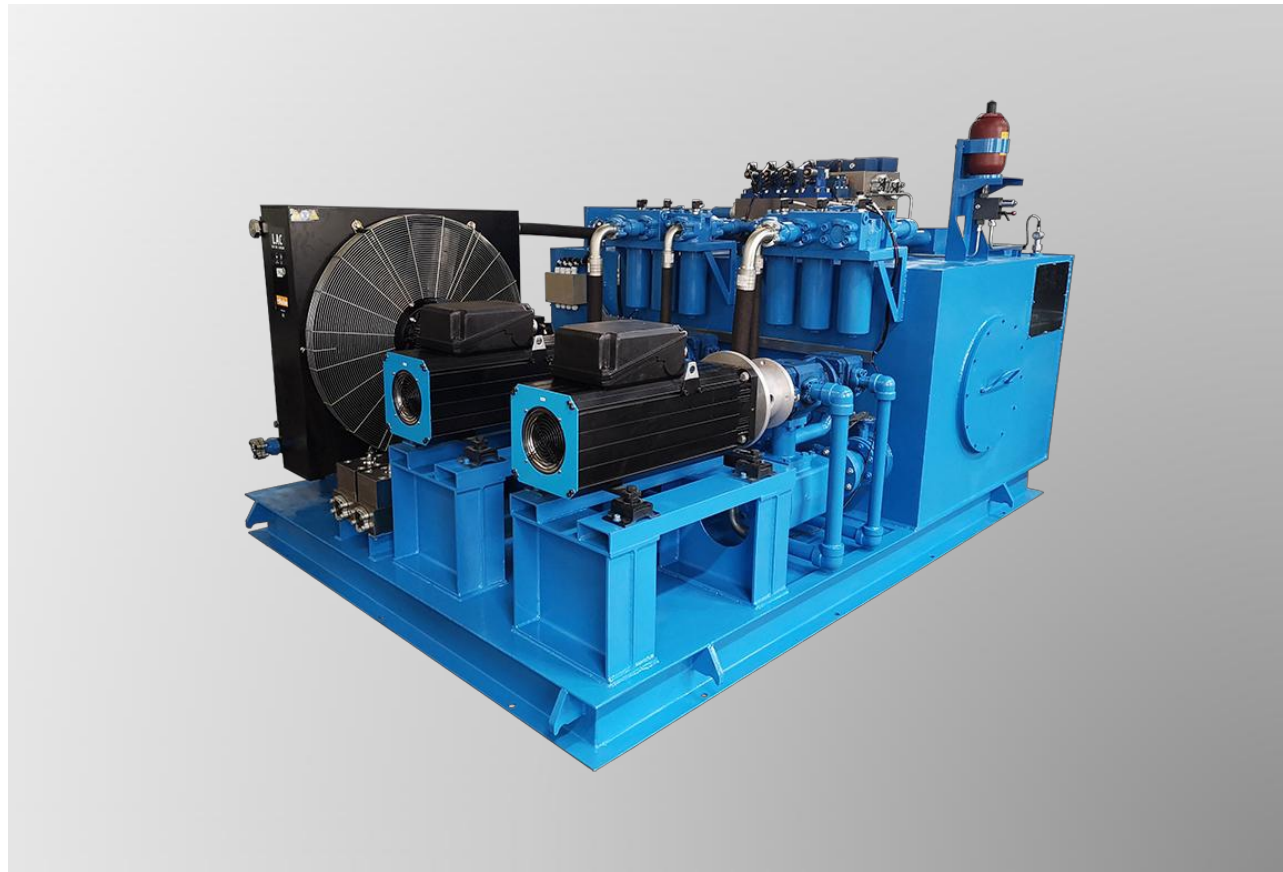
板式叠加阀
Industrial Valves



螺纹插装阀
Screw-in Cartridge Valves

HYDRAULIC POWER PACKS

液压泵站



液压泵站是将驱动电机（或内燃机）、液压泵、油箱、控制阀组、电控系统等高度集成的的液压动力总成。适用于驱动装置与液压站分离的机械设备。

鸿辉科技具有丰富的液压泵站研制能力，每年为环卫机械、石油机械、海工设备、工业流水线等行业定制开发数千套电液系统集成类产品，并形成自己的核心竞争力产品。

Hydraulic power packs is highly integrated Electro-Hydraulic System, which including the driving motor (or internal combustion engine), hydraulic pump, oil tank, compact modular valve, electronic system and others. It is suitable for the mechanical equipment where the drive device is separated from the hydraulic station.

Hydflly has decades of experience to customized product thousands of sets of hydraulic power packs for sanitation machinery, petroleum machinery, offshore equipment, industrial assembly line, etc.

环卫机械液压泵站产品

Hydraulic Power Packs for Garbage Compactor

鸿辉科技，环卫设备电液系统解决方案专业供应商！

自2004年研发出第一套移动式压缩箱电液系统以来，鸿辉科技现已开发出多种环卫移动压缩箱、垂直压缩站、竖压式压缩站、大型压缩处理站的电液系统集成产品。

鸿辉科技现已发展成为国内主流环卫设备制造企业的重点供应商，并成为国内知名的环卫设备电液系统专业制造商，年配套能力达3000套！

Hydflly is a professional supplier of hydraulic power packs for garbage compactors.

In 2004, Hydflly developed the first hydraulic power pack for mobile garbage compactor. Over the past decade, Hydflly has developed a variety of hydraulic power packs for mobile garbage compactor, vertical garbage compactor, horizontal garbage compactor. Hydflly is a well-known professional manufacturer of hydraulic power packs for garbage compactors in China, the annual supporting capacity of 3000 sets.

移动式压缩箱动力站

Hydraulic Power Pack for Mobile Garbage Compactor

移动式垃圾压缩箱是新一代垃圾压缩储运设备。该设备由垃圾储存箱、推铲压缩机构、翻斗机构、电液控制系统等组成，配套钩臂车使用。该设备具有结构紧凑、布置灵活、操作方便、不需建设基础和厂房等特点，适用于街道社区、医院、学校、公园、广场等各种垃圾收集转运的场所。

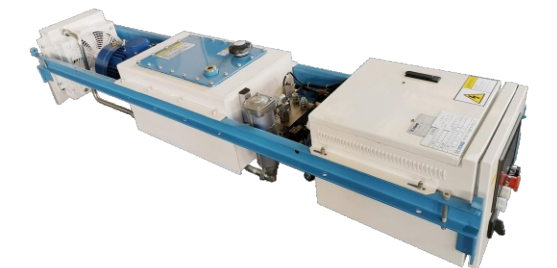
移动式压缩箱动力站作为垃圾压缩箱的控制总成，是一种高度集成化的电液系统，主要控制压缩箱的翻斗机构和推铲压缩机构。鸿辉科技作为国内移动式压缩箱动力站的主要制造商，产品具有多种特点。

Mobile garbage compactor is a new generation of garbage compression storage and transportation equipment. This equipment consists of garbage storage compression, push compression mechanism, tipping mechanism, electro-hydraulic control system, etc. It is used with hooked arm trucks. The equipment is compact in structure, flexible in layout, easy to operate, and does not require construction of foundations and factory buildings. It is suitable for use in streets, communities, hospitals, schools, parks, plazas and other garbage collection and transportation facilities.

The hydraulic power pack is the control assembly of the mobile garbage compactor, and is a highly integrated, which mainly controls the push compression mechanism and tipping mechanism. As the main manufacturer of this product in China, Hydflly's product has the following characteristics.



移动式压缩箱
Mobile Garbage Compactor



移动式压缩箱动力站
Hydraulic Power Pack
for Mobile Garbage Compactor

HYDRAULIC POWER PACKS

液压泵站

移动式压缩箱动力站

Hydraulic Power Pack for Mobile Garbage Compactor

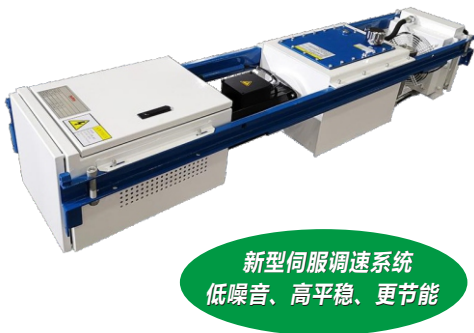
① 行业顶级配置 High Product Configuration

- ◆ 采用Danfoss、Siemens、Schneider、正泰等国内外知名品牌的液压、电气元件，确保系统性能稳定，安全可靠。
- ◆ The famous hydraulic and electrical component brands, such as Eaton, Siemens, Schneider and Chint are used to ensure the stable performance, safety and reliability of the system.

参数 Parameter	数值 Value	备注 Remark
油箱有效容积 Effective Tank Capacity	48L	可定制化 Customizable
电动机功率 Motor Power	5.5/7.5KW	
电动机电压 Motor Voltage	220/380VAC(50Hz)	单相三线制或三相五线制 Single-Phase 3-Line or Three-phase 5-Line Power
单联泵排量 Single Pump Displacement	14ml/r	单泵产品
双联泵排量 Double Pump Displacement	16+10.5,14+10.5, 14+14,11.2+8 ML/R	双泵产品
油泵最大工作压力 Max. Working Pressure	280bar	

② 高平稳、低噪音，优化的液压系统设计，产品性能更可靠 High Stationarity, Low Noise, Optimized Hydraulic System

- ◆ 液压系统中特别设计了卸荷功能和检测功能，柔性换向，有效降低了中位换向冲击和工作噪音，提高了动作到位的平稳性。
- ◆ 优化设计的控制阀组流道和系统结构，明显降低了液压系统压力损失和能耗。
- ◆ 液压油箱具有超过45°倾斜度的防溢（漏）油功能；箱体经镀锌处理，具有较强的耐腐蚀性能，所有油箱均经过气压压力防漏检测。
- ◆ 具有自动散热功能，防止液压系统油温过高；自动进行油位检测，液压油不足时油泵自动停止运行，保护系统安全。



- ◆ In the hydraulic system, the load relieving function and detection function are specially designed. The flexible switching reduces the neutral switching impact and working noise effectively, also improves the smoothness of the action.
- ◆ The optimized design of the integrated circuits flow-path and system structure significantly reduces the pressure loss and working energy consumption of the hydraulic system.
- ◆ The oil tank can prevent overflow (leakage) oil with an inclination of more than 45°. The cabinet has better corrosion resistance after being galvanized. All the tanks are tested for pressure leak prevention.
- ◆ With automatic heat cooling to prevent the hydraulic oil temperature much higher.

③ 行业顶级优化的电气控制，系统更安全，使用更可靠、便捷 Optimized Electrical Control System, high security, high Reliability

- ◆ 系统具有多种严密的保护措施和故障报警功能。同时采用电源相序监控、转换，确保电机正转。
- ◆ 操作界面采用触摸显示屏（具有4.3英寸、7英寸两种屏幕尺寸选择），控制界面美观大方，操作方式友好易用，可直接进行触摸操作，还可实时显示设备工作状态、故障信息及安全提示，能够直接进行工控参数修改（具有密码保护）。
- ◆ 设备操作具有面板操作、触摸屏操作、行车手柄操作、遥控手柄操作等多种操作选择。
- ◆ 主控制器采用专用PLC控制器，可靠性高，并可通过修改控制程序适用不同的控制动作，具有很好的可移植性。
- ◆ The system has a variety of strict protections and fault warning functions. Power phase sequence monitoring and conversion are used to ensure the motor correctly rotating.
- ◆ The operation interface adopts a color touching screen(having 4.3 inch and 7 inch to choose), the control interface is beautiful and elegant, the operation mode is friendly and easy to use, can directly touch operation, also can display the working status, failure information and safety prompts of the equipment in real time. It can directly modify the parameters of the industrial control (with password protection).
- ◆ The operation of the equipment includes panel operation, touching screen operation, handle operation, remote handle operation, etc.
- ◆ The main controller adopts a special PLC controller, which has high reliability, good portability and can be applied to different control actions by modifying the control program.

纯电动环卫车液压泵站

Hydraulic Power Pack for Electric Sanitation Vehicle

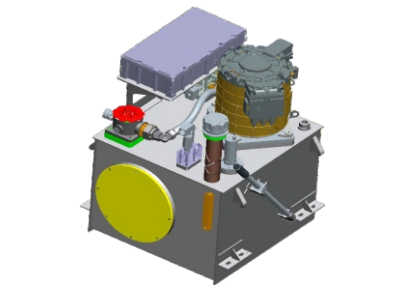
伴随环保要求的提升，环卫车辆的新能源化加速提升。纯电动洗扫车、纯电动垃圾压缩车等纯电动环卫设备大量使用。基于车辆电池包的直接电能供应，纯电动环卫车的液压系统实现了高度集成，将电机泵组、液压油箱、控制阀组等高度集成构建液压动力单元。

公司和国内纯电动环卫设备龙头企业建立了战略合作，多年来双方紧密合作持续优化纯电动环卫设备的液压系统性能。

With the environmental protection requirements, the new energy of sanitation vehicles is accelerated. Electric sanitation vehicle, such as electric road sweeper, electric compression garbage truck, began to be widely used. Based on the direct power supply of vehicle battery pack, the hydraulic system of electric sanitation vehicle is highly integrated. Hydfly has established strategic cooperation with domestic leading enterprises of electric sanitation equipment. Over the years, both sides have worked closely to continuously optimize the hydraulic system performance of electric sanitation equipment.

- ◆ 电液系统高度集成；
- ◆ 电机泵组：3-22KW、220/380VAC永磁同步电机，高性能驱动器，驱动齿轮泵实现机构动作的轻载高速、重载低速的高效节能运行；
- ◆ 控制阀组：高度集成，紧凑性设计；
- ◆ 可根据客户需求定制化开发。

- ◆ Electro-hydraulic system is highly integrated.
- ◆ Motor-Pump Unit:3-22KW, 220/380 VAC permanent magnet synchronous motor, high performance motor drive controller, gear pump,to achieve high-efficient and energy-efficient work.
- ◆ Compact modular valve: integrated circuits in the hydraulic systems to minimize the hydraulic connections'lay-out in the machines.
- ◆ Customized development.



高电压液压泵站
High Voltage Hydraulic Power Pack



纯电动洗扫车
Electric Road Sweeper

HYDRAULIC POWER PACKS

液压泵站

固定式压缩站液压泵站

Hydraulic Power Pack for Fixed Garbage Compactor

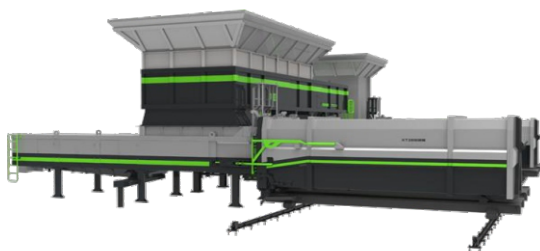
环卫机械中的固定式垃圾压缩站设备包括垂直式、水平对接式、竖压式、大型水平压缩式等种类，是垃圾预压缩处理的主要装置。液压泵站作为其中的核心控制总成，具有极高的使用可靠性要求。公司有着多年的固定式压缩站液压泵站的研发制造经验，针对不同类型的压缩站产品控制需求，具有丰富的电液控制系统解决方案。

The fixed garbage compactor includes vertical garbage compactor, horizontal garbage compactor, large horizontal garbage compactor and other types, which is the main device of waste pre-compression treatment. As the core control assembly, the hydraulic power pack is high reliability. Hydfly has many years of experience in the development and manufacturing hydraulic power packs for fixed garbage compactors, can provide better hydraulic control system solutions.



竖压式压缩站

Vertical Garbage Compactor



水平式压缩站

Horizontal Garbage Compactor

产品特点

- ◆ 电液系统高度集成；
- ◆ 液压泵站采用恒功率泵或双联泵驱动，实现机构动作的轻载高速、重载低速高效节能运行。电气系统采用PLC控制器控制，操作简单方便；
- ◆ 可根据客户需求定制化开发。

Features

- ◆ Electro-hydraulic system is highly integrated;
- ◆ Adopting constant-power variable pump or dual-pump to achieve high-efficient and energy-efficient working, Using PLC control to simple and convenient operation;
- ◆ Customized development.



大型水平压缩处理站液压泵站

Hydraulic Power Pack for large Horizontal Garbage Compactor



垂直式压缩处理站液压泵站

Hydraulic Power Pack for Vertical Garbage Compactor

海工装备液压泵站产品

Hydraulic Power Packs for Marine Machinery

公司在海洋工程装备领域具有成熟的应用经验，为自升自航式工程船、海上钻井平台等海工设备配套了大量的电液控制系统及功能元件，具有成熟的系统解决方案。

公司为某自升自航式海洋工程船桩腿升降研发的全闭式电液升降系统取得了多项关键技术创新，打破了欧美技术垄断。

Hydfly has been serving marine machinery for several years. It has mature system solutions for self-propelled and self-elevating platform and offshore drilling platforms. The fully closed electro-hydraulic lifting system developed by Hydfly for self-propelled and self-elevating platform has achieved many key technological innovations, breaking the technological monopoly of Europe and the United States.

该船桩腿升降系统为三根桩腿结构，采用了国际主流的齿轮齿条传动机构。公司采用自主研发的全闭式电液控制系统（行业内首次应用）、多运动机构大负载重力势能回收等技术，精准、高效、平稳、连续地实现了4200t船体在75米升降范围的水平姿态控制，打破了国内长期依赖进口系统的窘境。

The ship's leg lifting system is three-leg structure, adopting the international mainstream rack-and-pinion drives. Hydfly adopts self-developed fully-closed electrohydraulic control system (the first application in this industry), which achieves accurate, high-efficiency, smooth and continuous horizontal attitude control of the 4200t hull in the 75-meters lifting range, breaking the domestic long-term dependence on imported products.



自升自航式工程船桩腿升降电液控制系统

Hydraulic Power Pack for Self-propelled and Self-elevating Platform



HYDRAULIC POWER PACKS

液压泵站

石油机械液压泵站产品

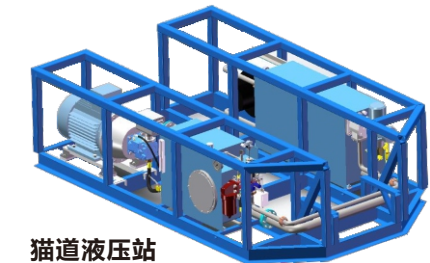
Hydraulic Power Packs for Petroleum Drilling Machinery

公司在石油行业服务已近20年，为自动化石油钻机提供多种高度集成化的电液系统 and 功能模块产品，直接提升钻机的自动化操作水平和使用可靠性。配套应用于的相关主机设备取得国家多项重大技术创新。公司现已发展成为国内龙头石油钻机生产企业的战略合作伙伴，服务于国家能源安全战略。

Hydfly has been serving in the oil industry for nearly 20 years, providing a variety of highly integrated electro-hydraulic system solutions for automated petroleum drilling machines, directly improving the automation level and reliability. Hydfl has now developed into a strategic partner of the domestic leading oil rig production enterprises, to serve the national energy security strategy.



石油钻机
Petroleum Drilling Machinery



猫道液压站
Hydraulic Cat



组合液压站
Combined Hydraulic Pack



铁钻工操作箱
TZG Control Box



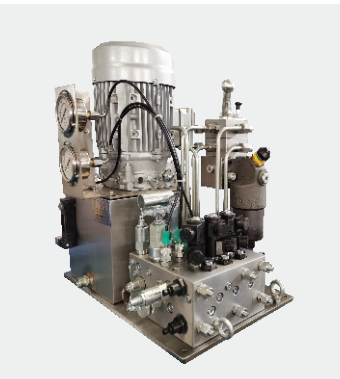
防爆液压控制箱
Explosion-proof Hydraulic Control Box

其他行业液压泵站产品

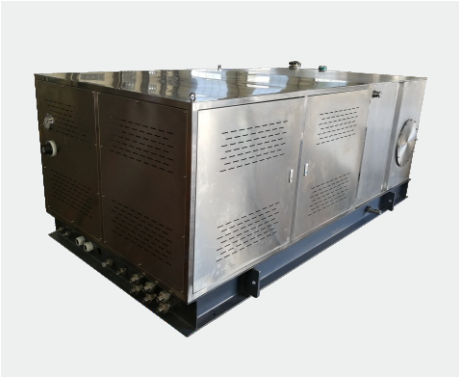
Hydraulic Power Packs for other Industries

多年来，公司也为机场、冶金、造纸、烟草、风电、塔机、军工等行业定制化开发多种电液系统集成产品，获得了用户的长期信赖。

Over the years, Hydfl has also provided a variety of custom-developed electro-hydraulic systems for special industrie, such as airports, construction cranes, metallurgy, paper making, tobacco, wind power and other general industries as well as the military industry, and has gained long-term trust from users.



烟草机械液压泵站
Hydraulic Power Pack for Tobacco Machinery



深海勘探等静压机液压泵站
Hydraulic Power Pack for Isostatic Pressing Machinery



造纸机械液压泵站
Hydraulic Power Pack for Paper Machinery



风电液压泵站
Hydraulic Power Pack for Wind Power Braking System



高频振动锤液压泵站
Hydraulic Power Pack for Vibratory Hammer



定制化电液集成液压泵站
Hydraulic Power Pack for Customed Application

MACHINE EQUIPMENTS

整机设备



公司具有丰富的机电液深度结合的智能装备的研制能力，综合利用自身在液压元件、电液系统集成、以及机械设计方面的优势，以泛工程机械行业为着眼点，为广大客户定制化开发细分市场需求的整机设备和功能部套。重点研发制造智能化的高空作业装备、矿山设备、应急救援装备等。

Hydfly provides mechanical-electro-hydraulic solutions for customized applications ,we also develop customized intelligent equipments for our customers. Focus on the research and development of aerial work platform, mining equipment, emergency rescue equipment, etc.

履带式高空作业平台 Tracked Aerial Platform



本产品为具有越野功能的履带式剪刀叉高空作业平台，特别适合野外斜坡路况、非硬化路面、泥泞、沙漠化路况的高空作业。底盘为履带式左右间距可调节底盘，上车为剪刀叉升降机构，两者通过公司独创的双调平机构（前后、左右调平）进行铰接连接，采用自研的自适应电液调平系统，实现履带底盘在复杂作业地面的上车机构自适应调平。

This equipment is a crawler scissor lift with cross-country function, especially suitable for aerial working in outdoor slope road condition, non-hardened road surface, muddy road condition and desertification road condition. The chassis is a crawler chassis with adjustable left-right spacing, and the vehicle is a scissor lift mechanism. The two are hinged and connected through the original double-leveling mechanism (front and back, left and right leveling) created by Hydfly. The Hydfly self-developed adaptive electro-hydraulic leveling system is adopted to realize the self-adaptive leveling of the vehicle mechanism of the crawler chassis on different working surfaces.

MACHINE EQUIPMENTS

整机设备

技术参数 Technical data	GKY880C	GKY1090C	GKY1290C	GKY1490C	GKY1690C
	汽油动力版 Gasoline			柴油动力版 Diesel	
承载能力 Basket capacity	300kg	450kg	300kg	450kg	300kg
最大工作高度 H1(Max working height)	8m	10.2m	11.9m	14.0m	16.0m
工作斗最大高度 H2(Max height basket floor)	6m	8.2m	9.9m	12.2m	14.2m
最大允许移动高度 H3(Moving height)	3m	6.5m	6.5m	6.5m	6.5m
发动机功率 (Engine power)	12kw	17.5kw	17.5kw	42kw	42kw
续航时间 (Autonomy)	>20h	>20h	>20h	>20h	>20h
底盘控制形式 (Undercarriage)	双水准 (Bi-Levelling)				
工作斗调平方式 (Basket levelling)	自动调平 (Automatic)				
液压指令 (Hydraulic commands)	电比例 (Proportionals)				
动态调平系统 (Dynamic Levelling System)	√	√	√	√	√
主动调平系统 (Pro-Active Levelling System)	√	√	√	√	√
最大行驶速度 (Kit for high speed)	Max 2.7km/h				
设备长度 L(Length)	2.27m	2.27m	2.27m	3.10m	3.10m
设备宽度 W(Width)	0.9/1.1m	1.42/1.64m	1.42/1.64m	2.01/1.8m	2.01/1.8m
重量 (Total weight)	2t	3.8t	4.0t	6.0t	6.5t

太阳能光伏电站工程作业车

Solar Photovoltaic Panel Working Machine

伴随“碳达峰、碳中和”的全球气候保护背景，太阳能作为重要的清洁能源得到了大力发展。大型太阳能光伏电站大多分布在戈壁、半固定沙漠、盐碱地等偏远、地形崎岖不平、作业环境恶劣的地区，建设施工和运维的难度较大。且受技术能力的限制，一直以来施工作业机械化水平较差，急需机械化、自动化、智能化程度较高的设备取代传统的人力施工方式。

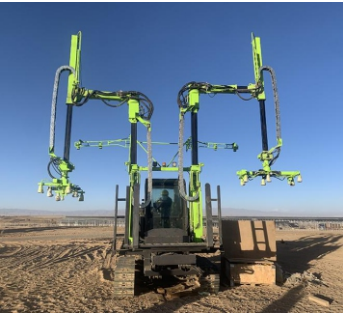
公司具有多年的光伏电站作业设备的研制经验，根据光伏电站施工、维保现场的作业需求，结合我司在机械、液压、电控等专业的综合能力优势，开发出太阳能光伏板铺装车、太阳能光伏板清洗车等设备，并在光伏电站整体施工智能化方面做了大量的技术储备。

Hydfly has years of experience in the development of the solar photovoltaic panel working machines, according to the scene of the photovoltaic power station construction and maintenance operation requirements, combined with our mechanical-electro-hydraulic solutions , we develop solar photovoltaic panel installation machine,cleaning machine, and other products.



太阳能光伏板铺装车：是基于施工工法为光伏板铺装定制化开发的智能化铺装设备。本产品采用多种雷达、传感设备，通过机电液高度结合，实现铺装工程车的智能化行走、作业姿态自动调整、双臂智能化铺装等作业项目，大大减少传统人力施工的人力成本，大幅缩短光伏电站建设周期。公司还为固定斜支架的光伏板安装开发了相应设备。

Solar Photovoltaic Panel Installation Machine:This product is a photovoltaic panel installation equipment customized based on the construction method. The equipment has the functions of intelligent walking, automatic adjustment of working posture and intelligent installation by using kinds of radars and sensors, compared with the traditional manual installation, greatly reduce the manual and speed up the installation cycle of photovoltaic power station.



太阳能光伏板铺装车
Solar Photovoltaic Panel Installation Machine

太阳能光伏板清洗车：是为大型光伏电站的光伏板清洗专门开发的设备。我国集中式光伏电站多分布于西北高原荒漠地带，常年因灰尘堆积造成的光伏板发电效率至少降低20%以上。当前最主要的还是采用人工清洗，效率低下，清洗质量还得不到保证。本产品具有极高的自动化、智能化水平，集合滚刷、吸尘、清扫等功能，适应不同路况、具有多种操作方式，实现高效、清洁的清洗作业，有效提升光伏电站发电的效率。

Solar Photovoltaic Panel Cleaning Machine： This product is developed for cleaning photovoltaic panels in large photovoltaic power stations. It has high levels of automation and intelligence,including the functions of rolling brush, vacuuming and cleaning. It is suitable for different road conditions, and efficient cleaning to effectively improve the efficiency of photovoltaic power generation.



太阳能光伏板清洗车
Solar Photovoltaic Panel Cleaning Machine

其他定制化主机设备

Other Customized Equipments



履带行走水射流机器人
Crawler Water Jet Cutting Robot



履带自行走吸水机器人
Crawler Water Suction Robot



轮履两驱作业车
Wheel-track Working Car

MARKET APPLICATIONS

市场应用



公司以机电液系列化产品为基础，以应用场景的需求为导向，为工程机械、环卫机械、港口机械、海工石油机械、矿山机械、军工等行业提供定制化系统解决方案。

Basing on our mechanical-electro-hydraulic products, we provide customized solutions to meet application scenarios' needs, including construction machinery, sanitation machinery, port machinery, offshore petroleum machinery, mining machinery, military industry and other industries.

MARKET APPLICATIONS

市场应用

工程机械行业解决方案 Solutions for Construction Machinery



工程机械是液压产品最大的下游应用行业，国内约40%的液压产品是应用于工程机械领域。公司在工程机械领域具有近20年的服务经验，非常重视在该领域的应用性技术开发。现已为工程起重机、臂架泵车、挖掘机、旋挖钻、高空作业平台等多种工程机械配套液压多路阀、功能阀组、液压油缸、液压泵站、电控系统等系列化产品及系统化解决方案。

We have been serving the construction machinery industry for nearly 20 years, and continue to supply hydraulic directional spool valves, compact modular valves, cylinders, hydraulic power packs, electric control systems and other systematic solutions, for crane, truck-mounted concrete pump, excavator, rotary drilling rig, aerial work platform, etc.

典型应用 Typical Application Cases

工程起重机：公司为汽车起重机、履带式起重机、全地面起重机、轮胎式起重机配套系列化产品，涵盖上车的主操纵多路阀、辅助多路阀、先导油源阀组、吊臂伸缩控制阀组、空调控制阀组、卷扬制动阀组、配重控制阀组、变幅油缸、伸缩油缸、配重提升油缸、上车电控系统等；底盘的支腿多路阀、悬架控制阀组、电液转向控制阀组、支腿控制阀组、支腿油缸、油气悬架油缸、底盘电控系统等。

Crane：We provide serialized products for truck cranes, crawler cranes, all-terrain cranes and rough-terrain cranes, including hydraulic directional spool valves for main mechanisms and auxiliary mechanisms, compact modular valves for pilot oil supply, boom telescoping, air conditioning control, winch braking, counterweight control, suspension control and electro-hydraulic steering, hydraulic cylinders for boom luff, telescoping, counterweight lifting, hydro-pneumatic suspension and leg, electric control system for the whole equipment. .

高空作业平台：公司为剪刀叉作业平台、直臂高空作业平台、曲臂高空作业平台配套系列化产品，涵盖电比例多路阀、主控制阀组、行走转向阀组、油缸锁定阀组、变幅油缸、伸缩油缸、摆动油缸、电控系统等，公司还可提供整机的设计方案，并具有整机制造能力。

Aerial Work Platform(AWP): We provide serialized products for scissor lifts, articulating boom lifts, telescopic boom lifts and other equipments, including hydraulic directional spool valves for main mechanisms, compact modular valves for main mechanisms, cylinder locking, walking & steering, hydraulic cylinders for boom luff and telescoping, rotary actuators, electric control system. We can also provide the design and manufacture of the whole machine.

环卫机械行业解决方案 Solutions for Sanitation Machinery



伴随着社会文明的发展、城镇化进程的加速，生活垃圾污染环境日益突出。绿水青山就是金山银山，人类的环保意识愈发强烈，对各种高效、便捷的道路保洁和垃圾收运的机械化环卫设备的需求大幅提升。市政环卫设备也成为液压产品的典型应用领域。公司自2004年研发出国内第一套移动式垃圾压缩箱电液系统以来，现已服务于环卫设备行业近20年，为垃圾压缩车、钩臂车、移动式压缩箱、垂直式压缩站、水平式压缩站、竖压式压缩站、大型水平压缩处理站等垃圾收运设备，以及洗扫车、扫路机器人等环卫保洁设备，配套液压多路阀、功能阀组、液压油缸、液压泵站、电控系统等产品及系统性解决方案。

Since 2004 we developed the first hydraulic power pack for mobile garbage compactor, Hydfly has been serving the sanitation machinery industry for nearly 20 years, and continue to supply hydraulic directional spool valves, compact modular valves, cylinders, hydraulic power packs, electric control systems and other systematic solutions for garbage compactor, detachable garbage truck, road sweeper, mobile garbage compactor, vertical garbage compactor, horizontal garbage compactor, etc.

MARKET APPLICATIONS

市场应用

港口行业解决方案

Solutions for Port Machinery



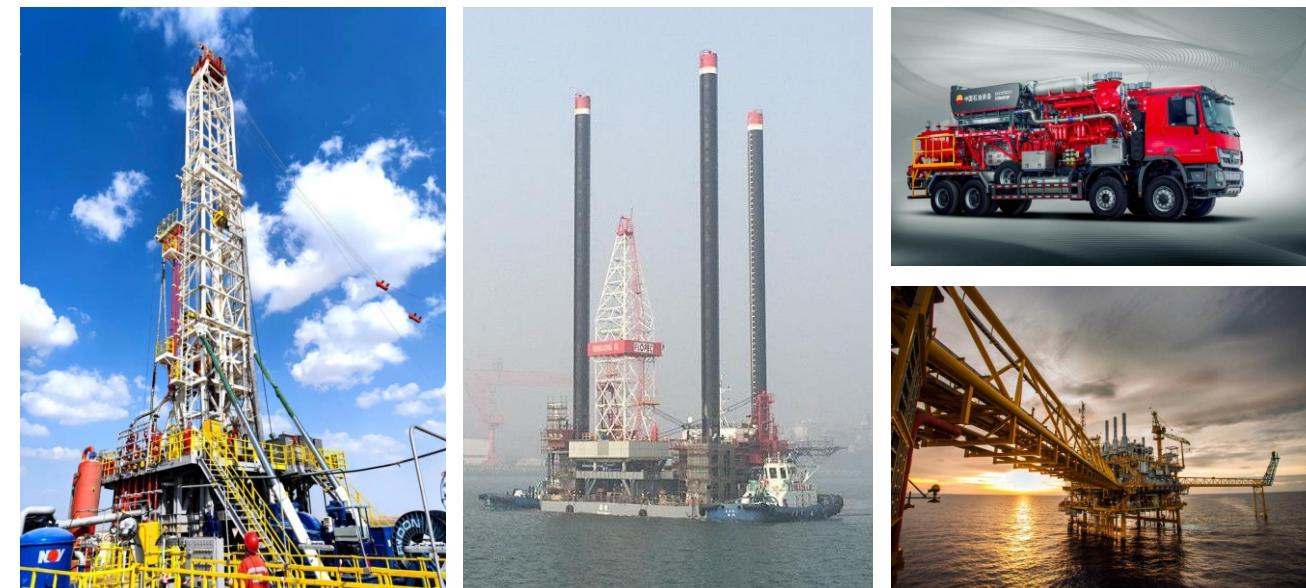
以现代化基础设施设备为基础的“智慧港口”是港口未来发展方向。公司服务于港口物流设备多年，为集装箱正面吊、堆高机、伸缩臂叉装车、港口AGV集装箱转运车、纯电动港口牵引车、集装箱跨运车、港口岸桥等现代化港口物流设备配套液压多路阀、功能阀组、液压油缸、液压泵站、电控系统等产品，构建出系统解决方案。

The “Smart Port” based on modern infrastructure and equipment is the direction of port development in the future. We have been serving the port machinery for many years, and continue to supply hydraulic directional spool valves, compact modular valves, cylinders, hydraulic power packs, electric control systems and other systematic solutions, for reach stacker, empty container handler, telehandler, port heavy-duty AGV, pure electric port tractor, port bridge etc.



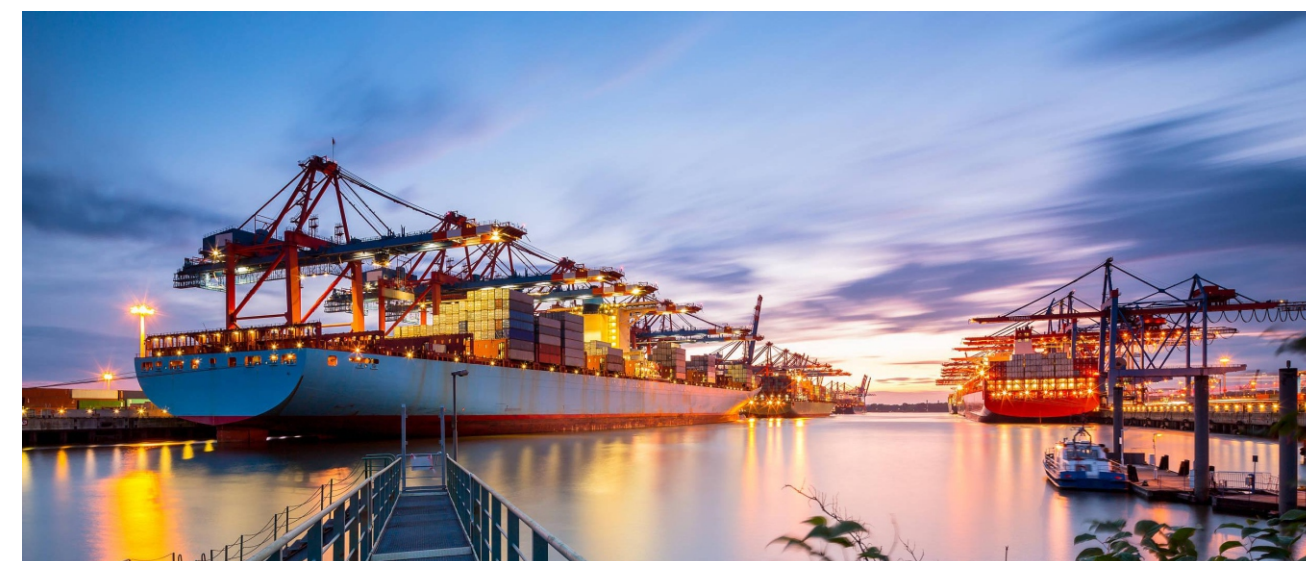
石油海工行业解决方案

Solutions for Petroleum&Offshore Machinery



石油是人类工业的血脉。从陆地到海洋，越来越先进的石油勘探和钻采设备正提升人类开采地球资源的能力。公司在石油、海工机械领域具有多年的服务经验，为石油钻机、自升自航式工程船、海洋钻机、海工平台、等静力压机等多种机械设备配套了液压多路阀、功能阀组、液压油缸、液压泵站、电控系统等元件和系统总成，并提供相关使用维护服务，具有成熟的系统解决方案。

Petroleum is the blood of human industry. We have been serving the petroleum and offshore machinery for many years, supply hydraulic directional spool valves, compact modular valves, cylinders, hydraulic power packs, electric control systems and other systematic solutions, for petroleum drilling machines, self-propelled and self-elevating platform, offshore drilling platforms, etc.



MARKET APPLICATIONS

市场应用

矿山行业解决方案 Solutions for Mining Machinery



公司在矿山机械领域拥有多年服务经验，为电动轮矿山车、矿山钻机、天顶钻机、移动破碎分选设备、斗轮机、高压水射流设备提供液压多路阀、功能阀组、液压油缸、液压泵站、电控系统等元件、系统乃至整机总成的系统解决方案。

We also have been serving the mining machinery for many years, supply hydraulic directional spool valves, compact modular valves, cylinders, hydraulic power packs, electric control systems and other systematic solutions, for mine dump trucks, mining drills, raise boring rigs, mobile screen, crawler water Jet cutting robot, etc.

鸿辉科技持续于创新性应用技术研究，
追求卓越的机电液系统解决方案，
为广大用户创造更有竞争力的产品价值

Innovation is the soul of an enterprise and
the guarantee of its sustainable development



Add : 湖南省长沙经济技术开发区星螺路1号
No.1,Xingluo Road,Changsha Economic & Technology
Development Zone,Changsha City,Hunan Province,China
Tel : +86-731-84870088
E-Mail : sales@hydfly.com.cn
Web : www.hydfly.com.cn